

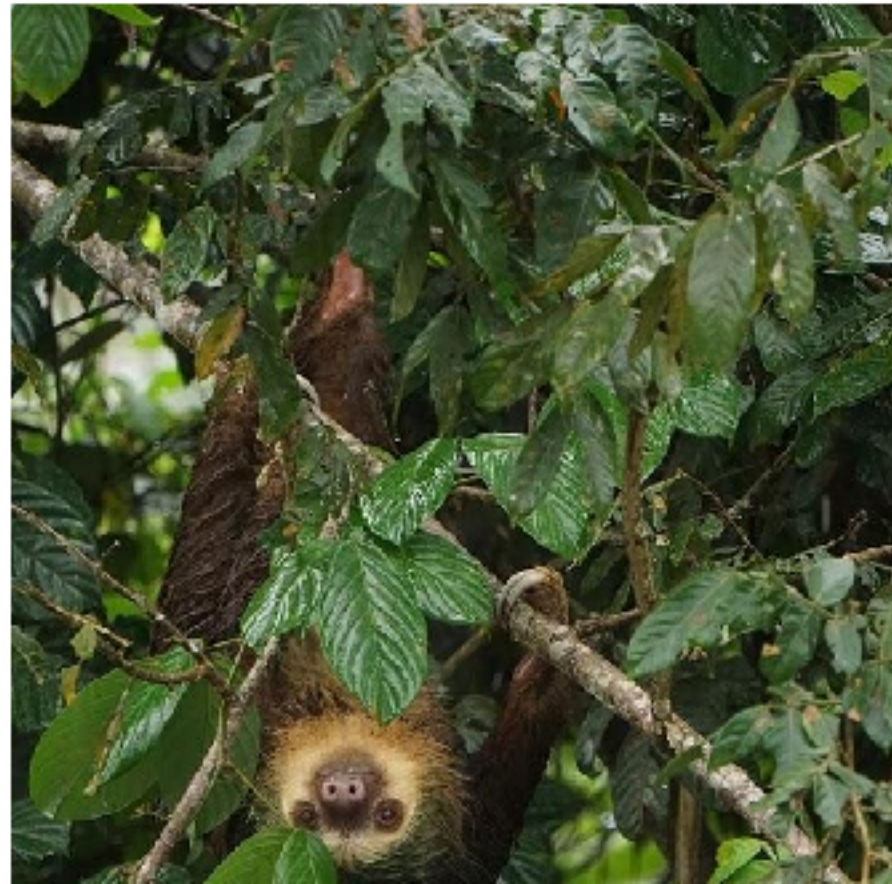


Sloths

By Emma Behan

Where do sloths live?

wild sloths live in central America, South America,
panama, Rost Rica, Brazil and Austrailia.
sloths can be found in the Amazon Rainforest.



Types of sloths

There are six types of sloths!
Including:

- 1 pygmy three toed sloth
- 2 maned three toed sloth
- 3 paled-throated sloth
- 4 Brown-throated sloth
- 5 Linnaeus two toed sloth
- 6 Hoffmans two toed sloth

pygmy three toed sloth



Hoffmans two toed sloth



what do sloths eat?

sloths usually eat a diet of insects, buds, leaves, small lizards, shoots, fruits and sometimes even birds!

Most of the time a sloth chooses a tree it would like to live in and eats the plants from the tree and around the tree.

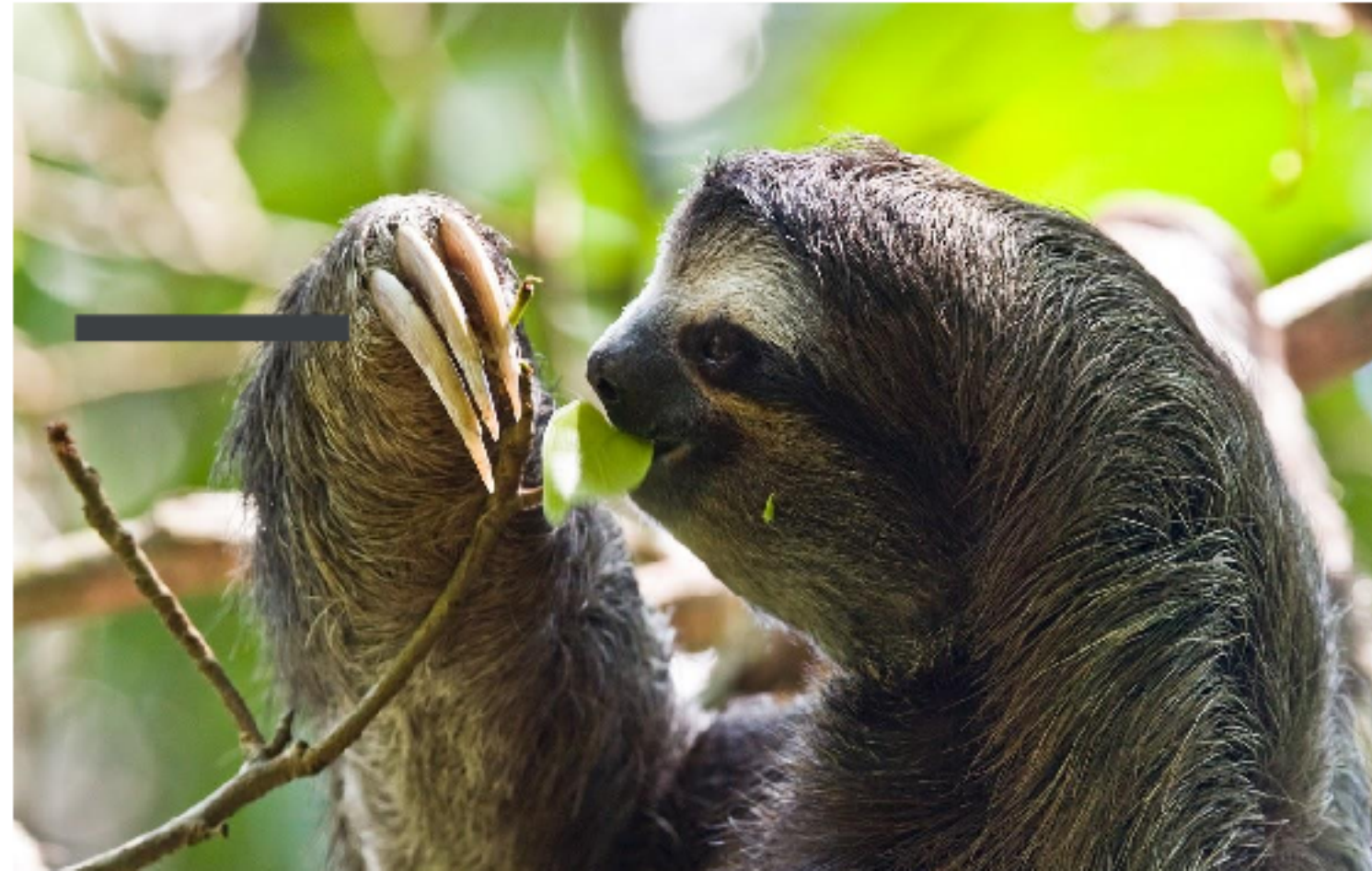


Did you know: It takes one whole month for a sloth to digest one leaf!

Are sloths dangerous?

Sloths are usually not dangerous to people as they are very friendly. Though they are friendly most of the time they are still wild. They have very sharp teeth and 4 inch long claws. They use their claws for climbing and defending themselves.

claws

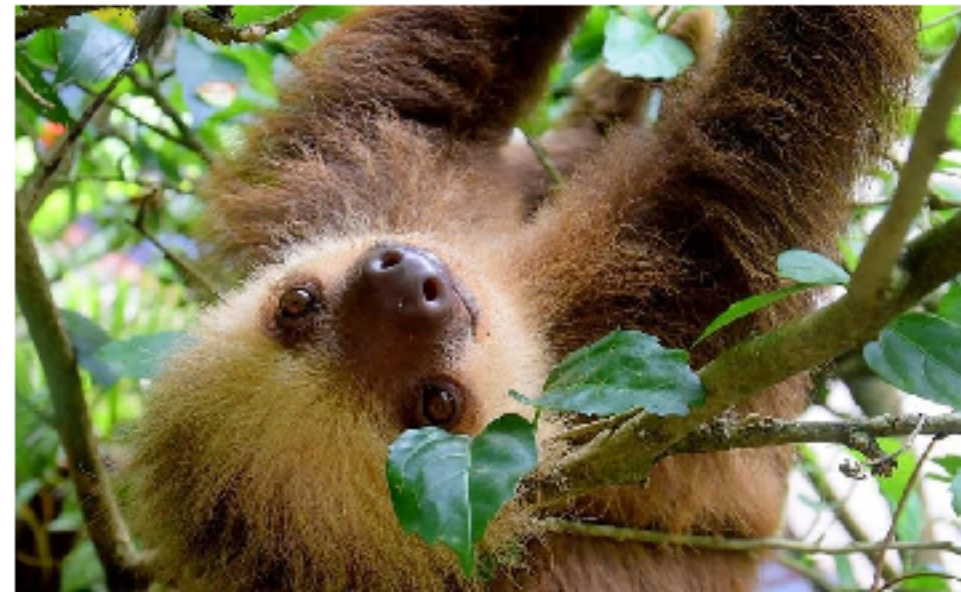
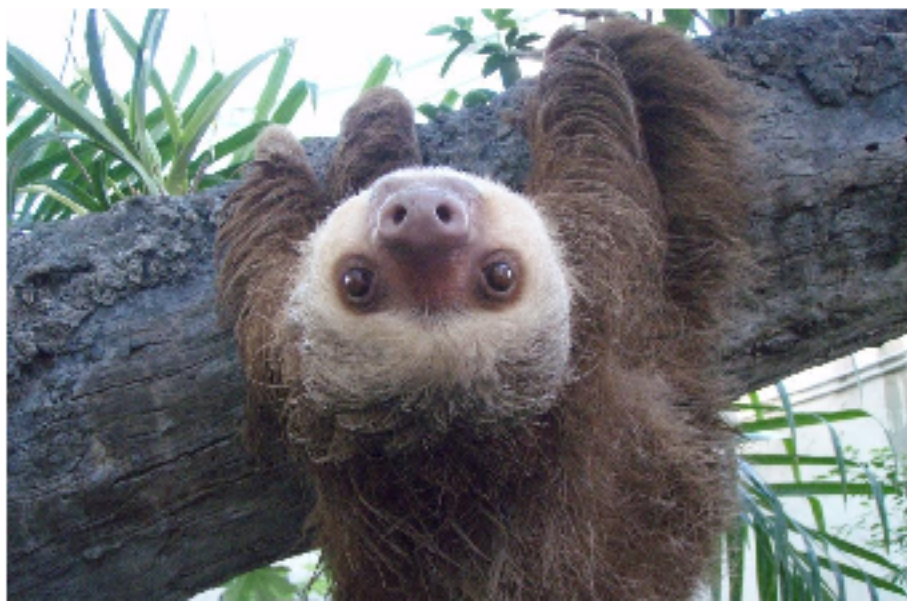


Facts about sloths

Did you know?

- 1 One sloth is three times stronger than us!
- 2 Sloths have a condition called monochromacy which means they are colour blind
- 3 Sloths poo a third of their body weight
- 4 sloths can fall 100 feet without injury
- 5 They can starve on a full stomach!

Here are a few pictures of sloths!



The End

Thank you for reading my presentation about sloths :)



Thank You